

# Avesta Classic Moly-Drop test 960

## Features

Avesta Moly-Drop test 960 is an easy to use chemical test that helps differentiate 304 grade stainless steel from 316 grade.

With this simple chemical test you can check if your stock piece or scrap of stainless steel is 304 or 316. The test will identify the grade within 5-10 minutes through a colour change.

## General characteristics

Can be used on stainless steel 300 series material to test presence of Molybdenum to differentiate grade 304 (no moly) from 316 (with moly).

## Chemical properties

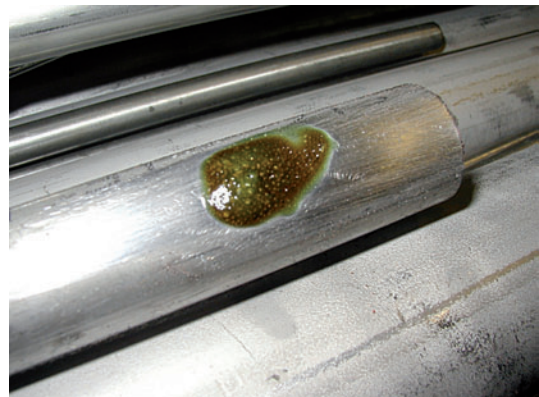
Composition:	Hydrochloric acid (HCl)
Form:	Yellow liquid
Density:	1.3 kg/lit
pH:	0



Identifying stainless steel grade with Avesta Moly-Drop test 960.



Testing 304 (EN 1.4301)



Testing 316 (EN 1.4436)

---

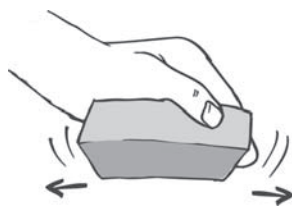
## Instructions for use

1.



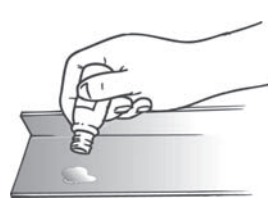
1. Shake the bottle well before use.

2.



2. Rub surface with abrasive.

3.



3. Apply 1-2 drops and wait 5-10 minutes.

4.



4. No colour change: grade 304.  
Colour change to dark brown: grade 316.

---

## Shelf life

The product has two year shelf life when stored properly. Exposure to high temperatures, such as direct sunshine, should be avoided as this may damage the product.

## Storage

Avesta 960 should be stored indoors at room temperature. Bottles must be kept properly closed, in an upright position and inaccessible to unauthorised persons.

## Packaging

960 is supplied in 30 ml ( ~200 tests) bottles.

## Worker safety

The product is corrosive and proper protective clothing should be used.

## Other information

For more information, please visit our website [www.avestafinishing.com](http://www.avestafinishing.com) where you can find Material Safety Data Sheets and other useful information.

Avesta Finishing Chemicals  
Lodgatan 14, SE-211 24 Malmö, Sweden  
Tel: +46 (0)226 821 00, Fax: +46 (0)40 93 94 24  
[www.avestafinishing.com](http://www.avestafinishing.com)

**Avesta**  
Finishing Chemicals